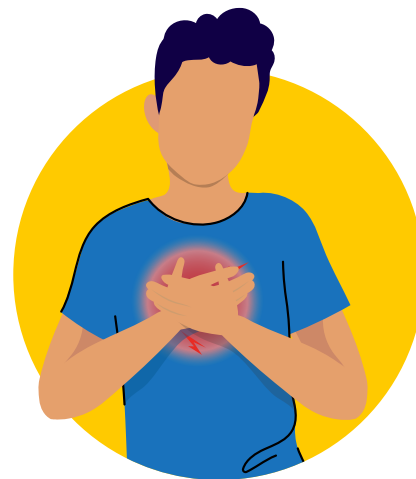


Ngaahi ma'u 'anga tokoni ki he COVID loloa

Fakamatala fakamuimui 4/2023

Ko e COVID loloa ko ha mahaki ne tupu mei he 'osi hono ma'u'a e mahaki COVID-19. 'Oku kau ai ha ngaahi faka'ilonga kehekehe, pea malava ke uesia katoa 'a e konga ho sino, pea tukufua mei he tomoloto 'o a'u ki he kovi 'aupito. 'Oku lahi 'a e kakai kuo nau sai 'aupito mei he COVID-19 he 'osi ha ngaahi uike si'i, pea 'oku 'i ai ha ni'ihi ia kuo tupu 'a e COVID 'o loloa pea a'u ki ha ngaahi mahina pe lau ta'u.

Talanoa mo ho toketa pe ko e kau tauhi mo'ui 'o kapau 'oku ke pehe 'oku ma'u koe he COVID. 'Oku 'ikai ha faito'o he taimi ni ki he COVID loloa, pea mahalo 'e lava he toketa 'o tokoni atu ki hono tauhi lelei 'a e ngaahi faka'ilonga.



Ngaahi kiliniki 'i Utah mo e polokalama ki he COVID loloa

University of Utah COVID-19 Long Hauler Clinic

'Alu ki ai pe vitio he telehealth
(801) 213-0884

'E fiema'u ha tohi mei ho toketa kae toki
lava 'o ma'u 'a e ngaahi tokoni ko 'eni.
Telefoni 801-213-0884 pe ko ha fax 'a tohi
mei he toketa ki he: 801-213-1147.

<https://healthcare.utah.edu/locations/covid-19-clinic>

Intermountain Health Long COVID Navigation System

'Alu ki ai 'o talatala. 'Ikai fiema'u ha tohi
mei he toketa.

801-408-5888

Northern Utah Rehabilitation Hospital

(801) 475-2102

'E fiema'u ha tohi mei ho toketa kae toki
lava 'o ma'u 'a e ngaahi tokoni ko 'eni.

Fax 'a e tohi mei ho toketa ki he:

(801) 475-2294.

<https://nurh.ernesthealth.com/>

Intermountain Pediatric Long COVID Navigation Clinic

'Alu ki ai pe ko ho vitio he telehealth
801-662-1639 ('ofisi lahi)

'E fiema'u ha tohi mei ho toketa kae toki
lava 'o ma'u 'a e ngaahi tokoni ko 'eni.
Telefoni 801-662-1610 pe ko ha fax 'a e tohi
mei he toketa ki he 801-297-1639.:

<https://intermountainhealthcare.org/primary-childrens/programs-specialties/long-covid/>

Bateman Horne Center

'Ikai fiema'u ha tohi mei he toketa.

Lesisita ki ai he

<https://batemanhornecenter.org/clinical-care/>

<https://batemanhornecenter.org/education/long-covid/>

Manatu'i, mahalo pe 'e totongi pe ta'etotongi ho 'inisia 'a e ngaahi faito'o mei he ngaahi kiliniki. Tomu'a 'eke ange ki ho kautaha 'inisia ki ha fakatetu'a 'o ha mo'ua te ke totongi pea toki fai 'a e faito'o.

Ngaahi kulupu tokoni

'E malava he kakai 'oku nau ma'u'a e COVID loloa 'o a'usia ha ta'efiemalie, loto hoha'a, pea mo ha loto mamahi. 'E toe lava foki ke toe faingata'a mo ha ngaue tokoni pe tauhi mo'ui. 'Oku 'i ai ha kulupu to'u tatau 'i Utah 'oku nau fai ha tokoni ki he kakai 'oku nau maa'usia 'a e me'a tatau.

Bateman Horne Center 'oku 'i ai ha kulupu tokoki ki he kakai 'oku nau ma'u'a e COVID loloa pea mo e kau pou pou pea pehe ki honau ngaahi 'ofa'anga.

'Oku 'ikai fiema'u ke te hoko ko ha mahaki 'i he BHC ke te toki kau ai. Kumi'a e tohi mahina fakamuimui taha mo ha fehokotaki (link) ai ke lesisita he <https://batemanhornecenter.org/events/>.

Univestiti 'o Utaha Kolisi 'o e Neesi 'oku 'i ai ha ongo kulupu kehekehe 'e 2. Ko e Kulupu Tokoni ke Sai ha kakai 'oku nau fe'ao mo e ngaahi palopalema 'o me'a 'oku te ongo'i 'o felave'i mo e COVID loloa. Ko e Kulupu Tokoni Loto Tangia 'oku nau tokoni kiate kinautolu na'e pekia ha nau 'ofa'anga mei he COVID-19. Telefoni 801-585-9522 ke lesisita pe 'a'ahi ki he <https://nursing.utah.edu/caring-connections>.

COVID loloa ko ha tisapiliti

'O kapau 'e fakangatangata he COVID ha taha pe toe lahi ange ha ngaahi 'ekitiviti 'i ho mo'ui, 'e lava ke fakatu'unga ia he fakahinohino Tisapiliti he Malumalu 'o e Lao Tsapiliti 'o 'Amelika (ADA).

- U.S. Fakahinohino Potungaue 'o e Mo'ui mo e Tokoni Kakai ki he "COVID Loloa" ko ha Tisapiliti he Malumalu 'o e ADA" <https://www.hhs.gov/civil-rights/for-providers/civil-rights-covid19/guidance-long-covid-disability/index.html>
- Senita Lao 'a e Utah Tisapiliti (800) 662-9080 or <https://disabilitylawcenter.org/>

Mahalo 'e malava ai 'o kualafai ki he ngaahi penefiti Medicaid pe ko e 'Inisiau Tisapiliti 'o e Social Security. Ke toe 'ilo lahi ki ai he <https://www.ssa.gov/benefits/disability/> pe fetu'utaki ki ha kautaha 'oku nau tokoni ki he kakai ke fai ha tohi kole ki he ngaahi penefiti ko 'eni:

- Ability 1st Utah 801-373-5044 or <https://ability1stutah.org/contact-us/>
- Utah Department of Workforce Services <https://jobs.utah.gov/usor/dds/index.html>
- Utah Legal Services <https://www.utahlegalservices.org/>

Ke toe 'ilo lahi ki ai: <https://coronavirus.utah.gov/covid19-long-haulers/>