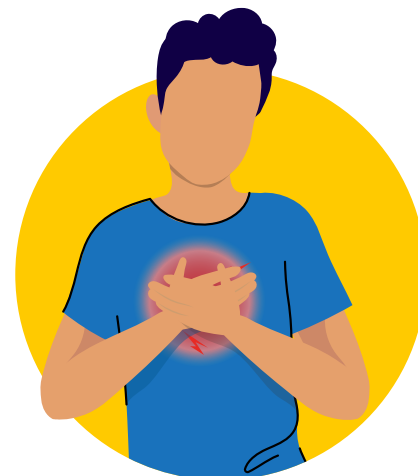


Jibañ ko kōn Aitokin COVID

Enaan ko rōkāäl 4/2023

Aitokin COVID ej juon nañinmej eo ej walok ālikin COVID-19 toraŋe. Ekoba bwijin kakōlle ko, remaroñ jelōt jikin ko ilo ānbwinnim, im allok jen mera ñan lap. Ke elōñ jet armej ro emōj aer mour jen COVID-19 ilo jet wōt wiik, jet armej ej ejaak aitokin COVID im rej eñjake kūtien ilowaan jet allōñ ak jet iio.

Ennaan ibbān juon taktō ak rijerbalin ājmour ñe emaroñ wōr am nañinmej in aitokin COVID. Kio, ejjelok wāween böbrae nañinmej in aitokin COVID, bötaab juon taktō emaroñ jibañ yuk kōn men ko kwōj eñjake.



Clinic ko an Utah mwe elōñ būrookraam ñan aitokin COVID

University of Utah COVID-19 Long Hauler Clinic

Waween ko in delōñ lok ak taktō ilo talboon ak online.

(801) 213-0884

Juon taktō ej aikuj letok etam bwe jen jibañ yuk. Call 801-213-0884 or fax the provider referral to: 801-213-1147.

<https://healthcare.utah.edu/locations/covid-19-clinic>

Intermountain Health Long COVID Navigation System

lien delōñ tok in Taktō. Jab aikuj lelok etam.

801-408-5888

Intermountain Pediatric Long COVID Navigation Clinic

lien delōñ tok in Taktō im Taktō ilo Talboon ak Online.

801-662-1639 (lukkun wōpij eo)

Juon taktō ej aikuj letok etam bwe jen jibañ yuk. Ennaan lok ñan 801-662-1610 ak fax ñan taktō eo ear letok etam ñan 801-297-1639:

<https://intermountainhealthcare.org/primary-childrens/programs-specialties/long-covid/>

Bateman Horne Center

Jab aikuj lelok etam. Kanne ilo

<https://batemanhornecenter.org/clinical-care/>

<https://batemanhornecenter.org/education/long-covid/>

Northern Utah Rehabilitation Hospital

(801) 475-2102

Juon taktō ej aikuj letok etam bwe jen jibañ yuk.

Fax ie Taktō eo ear letok etam ñan: (801) 475-2294.

<https://nurh.ernesthealth.com/>

Keememej, joortoklik eo am ej maroñ ak maroñ jab bōk eddoin menin jibañ ko jen clinic kein. Kajjitōk ibbān kombaniin joortoklik eo am kōn wōnān menin jibañ ko mokta jen am bōkie bwe kwōn jella mokta.

Kumi in Jibañ

Armej ro ewōr aer aitokin COVID rej maroñ eñjake ear inebata, ekorkor, im jab emman aer bād. Ej bar maroñ ben ñan juon rijibañ ak rikau. Elōñ kumie ko rej bād ioon utah mwe rej onaake jibañ ko ñan ro jet mwe ewōr aer uwōta ko kon men ko ainwōt juon.

Bateman Horne Center elōñ an kumie in jibañ ñan armej ro elōñ aer aitokin COVID im rijibañ ro im baamle ko. Kōjab aikuj juon rinañinmej in BHC bwe kwōn maroñ etal. Eoroñ jen kōlōnta eo emōj kajimwe jen jikin kanne online ilo <https://batemanhornecenter.org/events/>.

University of Utah College of Nursing rej lewōj 2 kumi in jibañ ko. Recovery Support Group eo ñan armej ro ewōr aer nañinmej in menin eñjake rar walok jen aitokin COVID. Grief Support Group eo ej jibañ ro ewōr aer būromōj kōn an kar jako ro rej iakwe er kōn nañinmej in COVID-19. Ennaan lok ñan 801-585-9522 in kanne ak etal ñan <https://nursing.utah.edu/caring-connections>

Aitokin COVID ilo utamwe

Ñe aitokin COVID elab an kadik lok juon ak elōñ lok makūtkūtin ilo mour, melelin emaroñ delōñ iumwin utamwe iumwin Americans with Disabilities Act (ADA) melele ko.

- U.S Department of Health and Human Services Guidance ioon “Long COVID” ke ej Disability lumwin ADA <https://www.hhs.gov/civil-rights/for-providers/civil-rights-covid19/guidance-long-covid-disability/index.html>
- Utah Disability Law Center (800) 662-9080 or <https://disabilitylawcenter.org/>

Kwōj maroñ bar bōk jibañ jen Medicaid ak Joortoklik jen Social Securiry Disability. Katak elab lok ilo <https://www.ssa.gov/benefits/disability/> or contact an agency which helps people apply for these benefits:

- Ability 1st Utah 801-373-5044 ak <https://ability1stutah.org/contact-us/>
- Utah Department of Workforce Services <https://jobs.utah.gov/usor/dds/index.html>
- Utah Legal Services <https://www.utahlegalservices.org/>

Katak elab lok ilo: <https://coronavirus.utah.gov/covid19-long-haulers/>