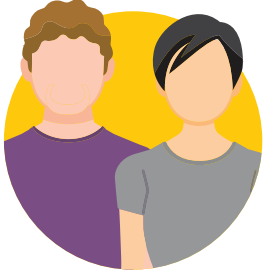


## Scenario example

---

# An essential or critical infrastructure employee has a family member who was exposed to COVID-19, but the employee was not exposed to the person who tested positive.



### Angela and Zach are married.

Angela is an essential employee at a power plant.



**The health department called Zach to tell him he was exposed to a person who tested positive for COVID-19.** This means he was closer than 6 feet or 2 meters (about 2 arm lengths) for 15 minutes or more.

- Zach must quarantine at home for 14 days.

**The health department will tell Zach when to get tested.**



### The health department did not call Angela.

She was not in close contact with the person who tested positive.

- She can go to work.
- Angela does not need to tell her employer her husband is quarantined.
- Angela does not need to quarantine UNLESS Zach gets sick or tests positive for COVID-19.
- Angela does not need to get tested.