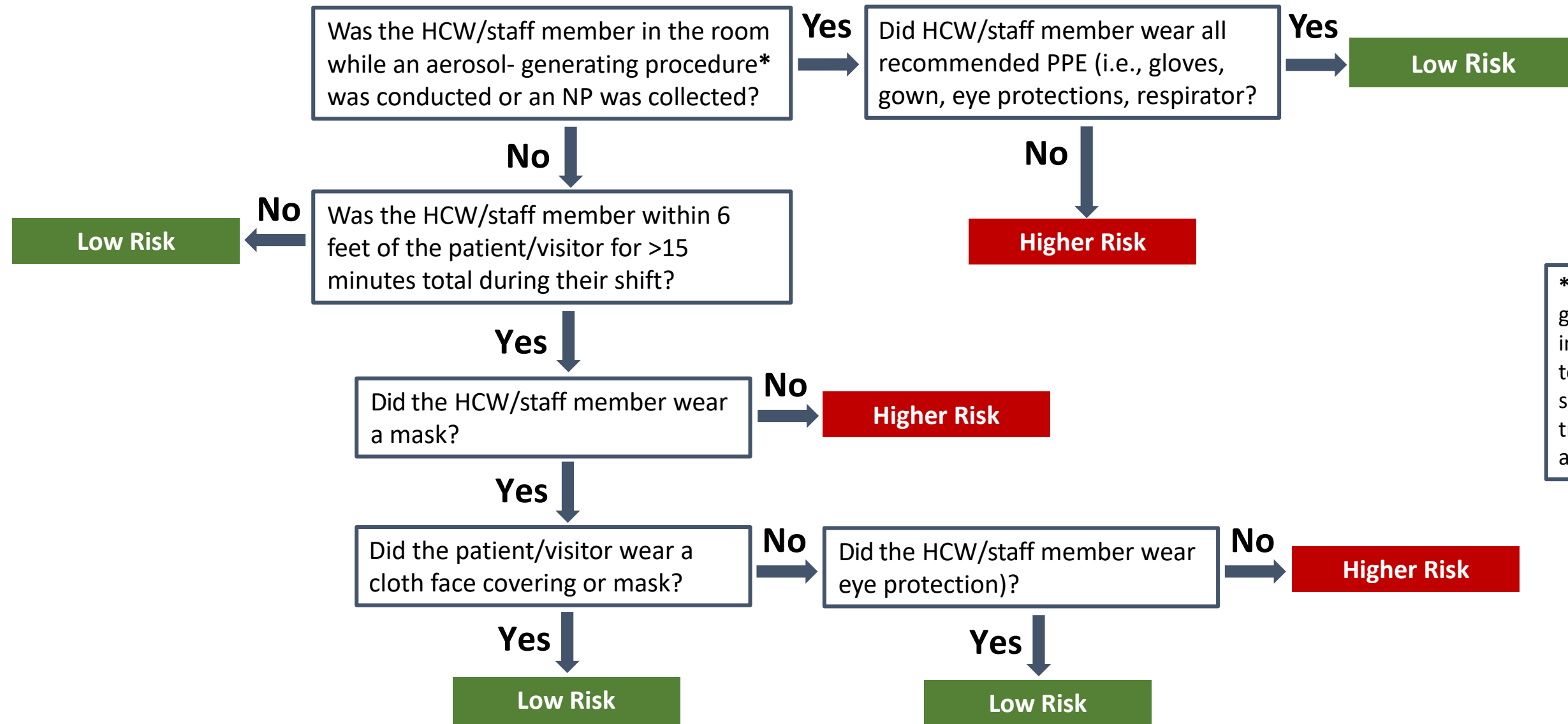


Utah COVID-19 Guidance for Assessing Healthcare Worker (HCW) Risk

Patient/Visitor is COVID+



*Examples of aerosol-generating procedures include, but are not limited to, intubation/extubation, suctioning, nebulizer treatments, bronchoscopy, and sputum induction

Low Risk

- HCW should monitor symptoms for 14 days.
- If symptoms develop, HCW should report to manager and call healthcare provider to arrange testing.

Higher Risk

- Facility should consider HCW exclusion for 14 days, if sufficient staffing is available. Otherwise, HCW can work until symptomatic.
- Outside of work, HCW should quarantine for 14 days.
- If symptoms develop, HCW should call healthcare provider to arrange testing.

Utah COVID-19 Guidance for Assessing Patient Risk

Healthcare Worker (HCW) is COVID+



Low Risk

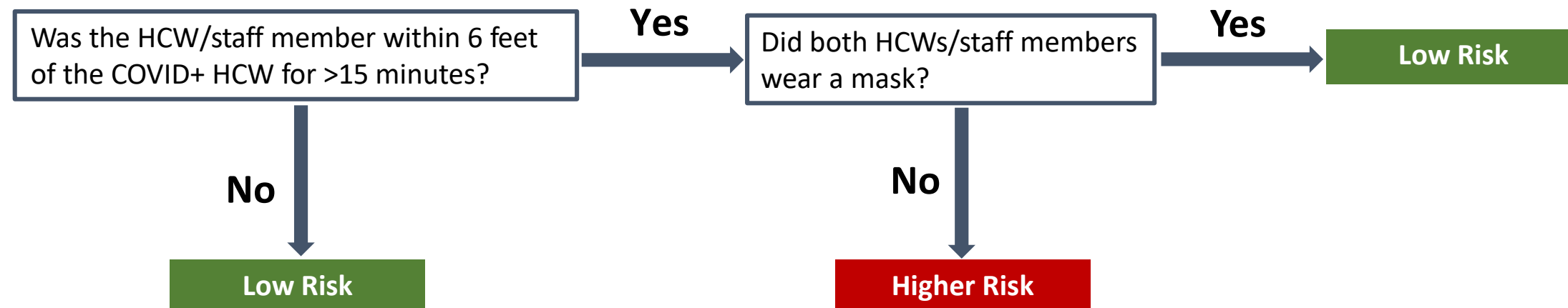
- Patient should monitor symptoms for 14 days.
- If symptoms develop, patient should call healthcare provider to arrange testing.

Higher Risk

- Patient should quarantine for 14 days.
- If symptoms develop, patient should call healthcare provider to arrange testing.

Utah COVID-19 Guidance for Assessing Other Healthcare Worker (HCW) Risk

Healthcare Worker is COVID+



Low Risk

- HCW should monitor symptoms for 14 days.
- If symptoms develop, HCW should report to manager and call healthcare provider to arrange testing.

Higher Risk

- Facility should consider HCW exclusion for 14 days, if sufficient staffing is available. Otherwise, HCW can work until symptomatic.
- Outside of work, HCW should quarantine for 14 days.
- If symptoms develop, HCW should call healthcare provider to arrange testing.